

# Aluminium curtain track instructions

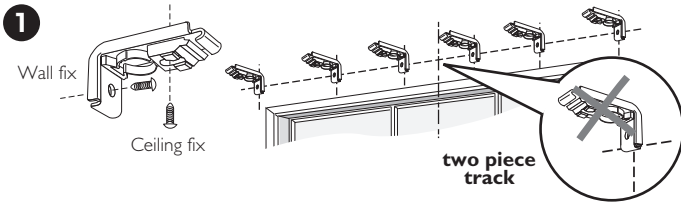
Please note: This product is supplied with fittings for general use. These fittings may not be suitable for all wall types. Please use appropriate fittings suitable for your wall type.

We recommend a professional or a person competent in DIY undertake this installation.

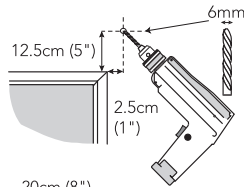
## Parts in the pack

curtain track	Support	end caps	Gliders support	Magnetic closers	Bending inserts	Joiner	screw & wall plug set
150cm	4	2	18	1 pair	2		8 sets
200cm	5	2	22	1 pair	2		6 sets
250cm	6	2	26	1 pair	2	1	8 sets
300cm	8	2	32	1 pair	2	1	10 sets
350cm	10	2	36	1 pair	2	1	10 sets
400cm	10	2	42	1 pair	2	1	10 sets
500cm	16	2	52	1 pair	2	1	16 sets

## Positioning the supports

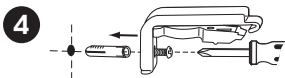
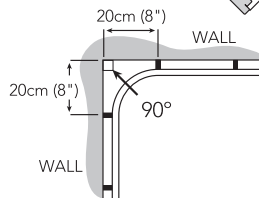


The supports can be either top or face fixed. Evenly space the supports along the window length making sure they are level. For 2 piece tracks using a joiner - do not place a support at the centre where the two tracks will join.



2 Mark the support positions. Drill positions.

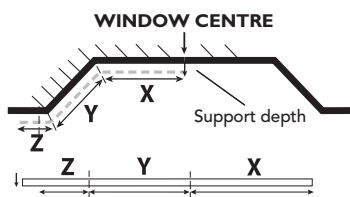
3 For bay windows to generate a smooth bend position the supports as shown.



NOTE: See hanging track for return bays with top fix.

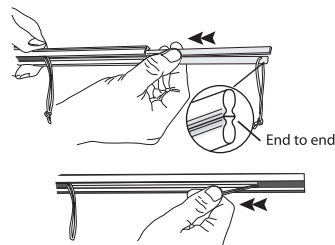
## Bending the track

5 Note: Check the track is the right length for your window before bending. Measuring from the window centre mark the positions of each corner bend on the track.



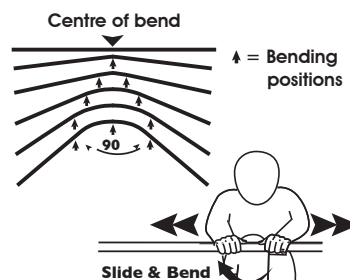
For two piece tracks place the end of each track length at the window centre and work outwards leaving any excess track at the ends of the bay.

6 Insert the bending inserts as shown. Spray a little furniture polish inside the track to aid the process.



Slide them to where the bend is to be made.

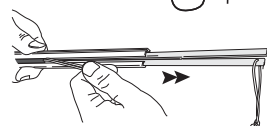
7 From this centre position slide and bend the track as shown. Face the smooth track side into the room.



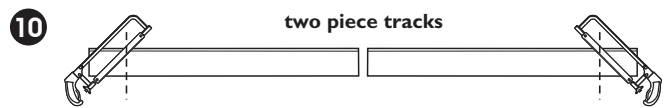
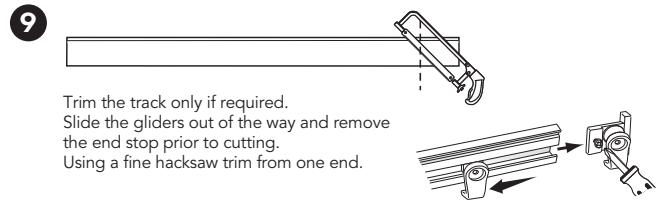
Before bending here's a practical tip - Use your knee to ease the bending process to generate a smooth bend by gently spreading the pressure throughout the length of the bend. Bend no more than 3cm in one place.

This track will bend into bays up to 90°. It can also be used to create return bends.

8 After completing your bends, slide and remove the bending inserts from the track.



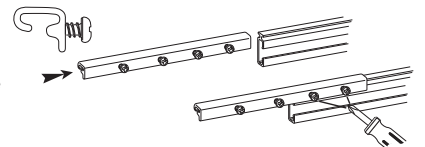
## Trimming the track



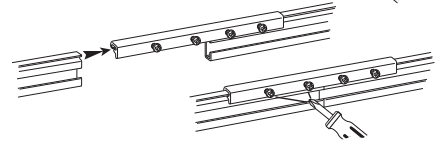
For two piece tracks, remove end stops (as above) and trim an equal amount from the outer ends of each piece leaving the uncut ends (as factory supplied) to the centre where the join will be.

## Joining 2 piece tracks

A Work from the rear of the track. With the joiner orientated as shown, slide halfway onto the first piece of track and secure.



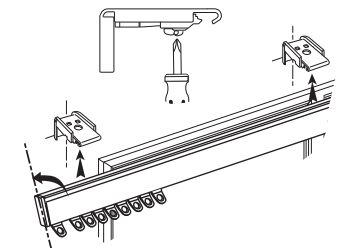
B Slide the second track into the joiner. Secure in place with screws provided.



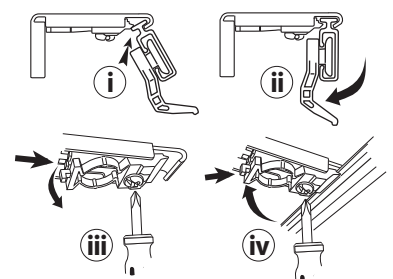
## Hanging the track

11 Loosen the screws on the underside of the brackets.

12 With an equal number of gliders located at each end of the track, angle the track with the gliders forwards and up as shown. Offer the track up to the brackets and rest into place into the front of the brackets as shown in fig (i).



13 Rotate the track clockwise until it clicks into place (ii). Check to make sure it is locked correctly into each bracket. To aid bay and return bay hanging loosen support screw and ease out the rear of the spring clip (iii), hang track and replace clip (iv).



NOTE: For bay returns with top fix we recommend fixing the supports to the track prior to hanging

14 Secure the track with the screws below the brackets.

